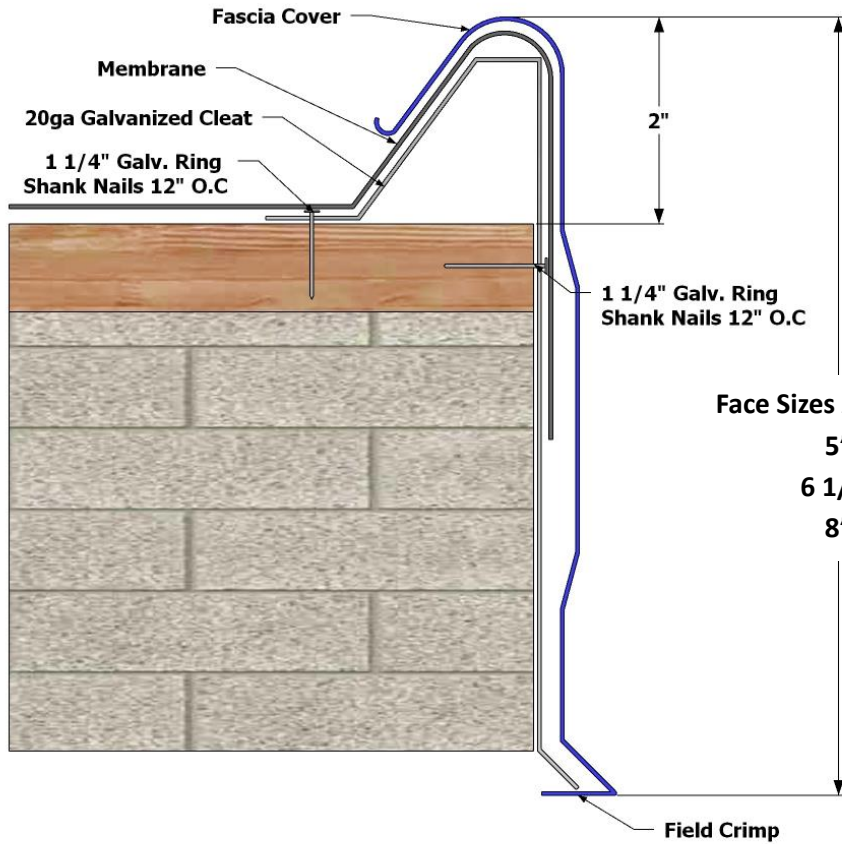


AFAB CANT DAM Fascia with Stiffener

Fascia: Available in 24ga/22ga Steel or .032/040/050 Aluminum

Cleat: 20ga Galvanized Steel

ANSI/SPRI/FM 4435/ES-1 Compliant

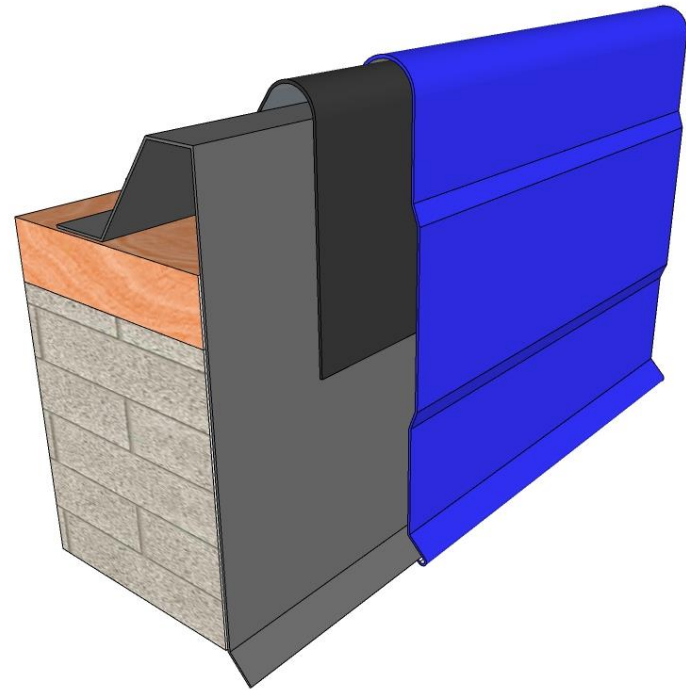


Face Sizes Available:

5"

6 1/2"

8"



Company: _____

Material/Gauge: _____

Job Name: _____

Color: _____

Lineal Feet: _____

Manufacturer: _____

