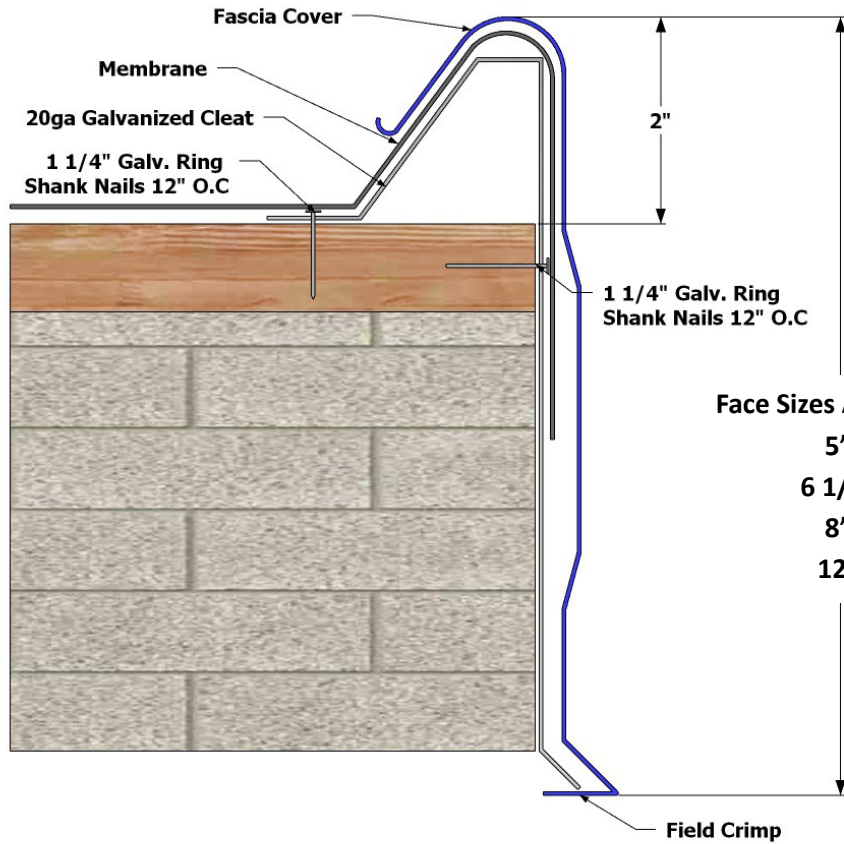


AFAB CANT DAM Fascia with Stiffener™

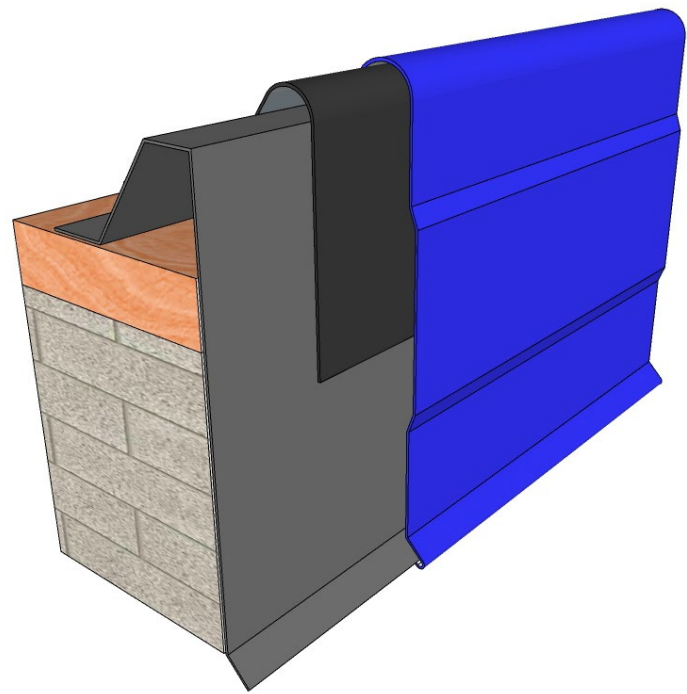
Fascia: Available in 24ga/22ga Steel or .032/040/050 Aluminum

Cleat: 20ga Galvanized Steel

ANSI/SPRI/FM 4435/ES-1 Compliant



Face Sizes Available:
5"
6 1/2"
8"
12"



Company: _____
Job Name: _____
Lineal Feet: _____

Material/Gauge: _____
Color: _____
Manufacturer: _____

