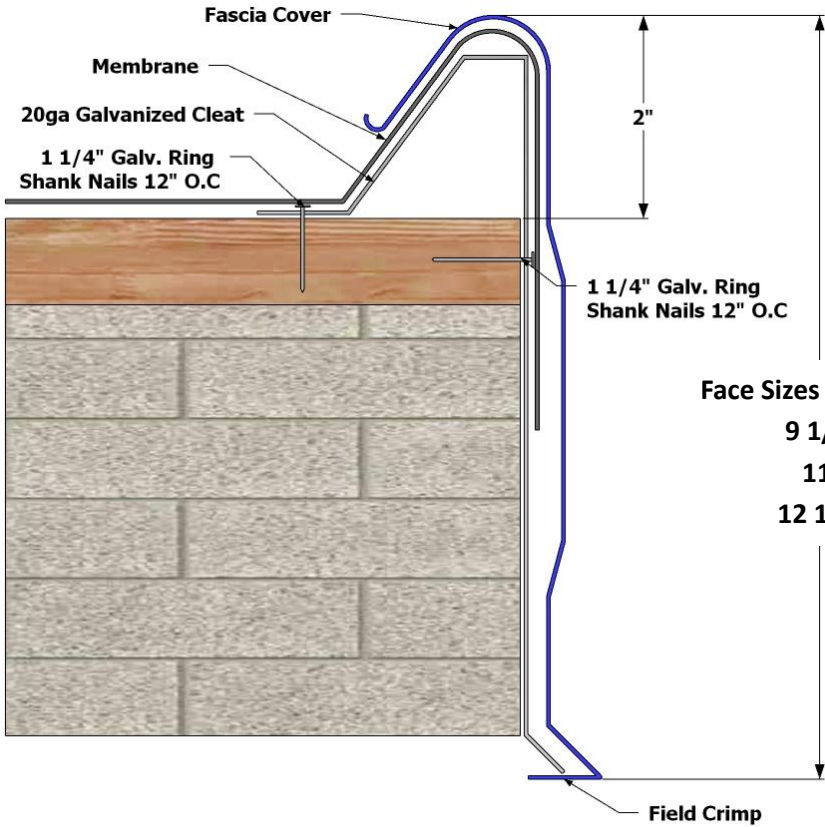


AFAB CANT DAM FASCIA WITH STIFFENER

FASCIA: AVAILABLE IN 24GA/22GA STEEL OR 040/050 ALUMINUM

CLEAT: 20GA GALVANIZED STEEL

ANSI/SPRI/FM 4435/ES-1 COMPLIANT

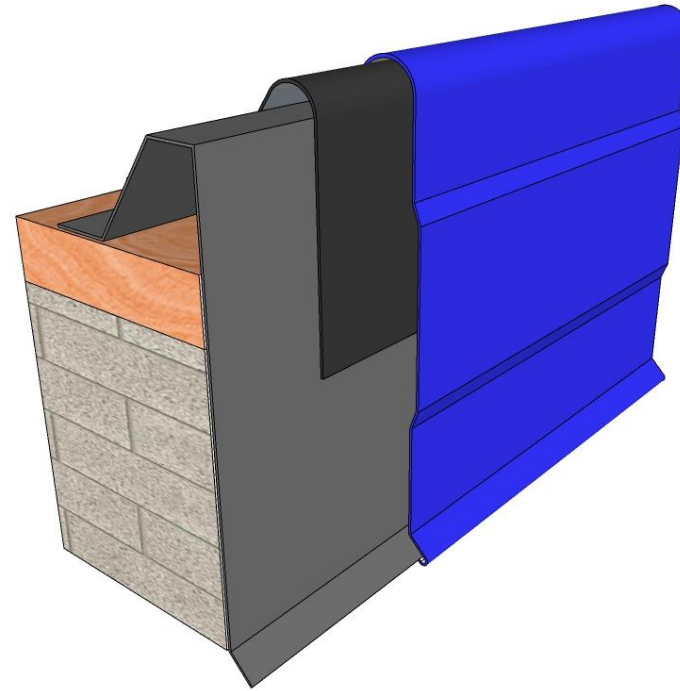


Face Sizes Available:

9 1/2"

11"

12 1/2"



Stiffener Optional

COMPANY: _____

MATERIAL/GAUGE: _____

JOB NAME: _____

COLOR: _____

LINEAL FT: _____

MANUFACTURER: _____

