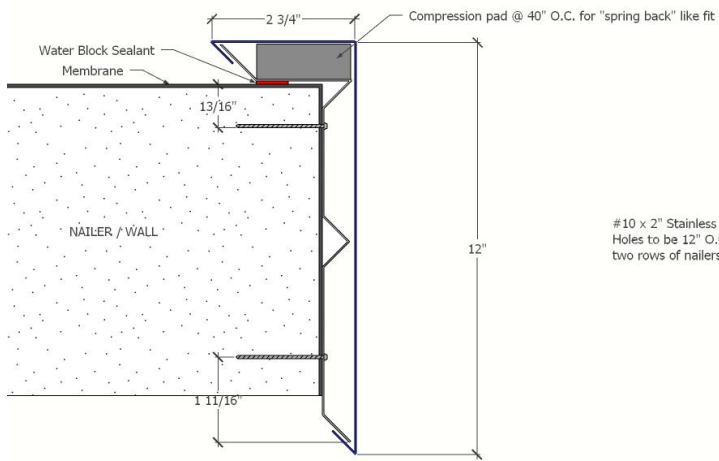


SNAP LOCK EDGE

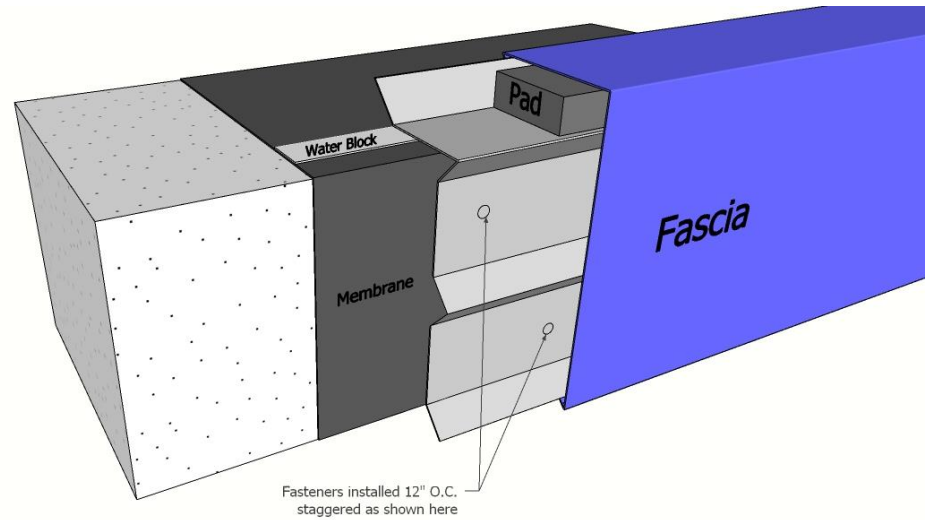
FASCIA: AVAILABLE IN 24GA STEEL OR 040 ALUMINUM

CLEAT: 20GA GALVANIZED STEEL

ANSI/SPRI ES-1 COMPLIANT



#10 x 2" Stainless Steel Fasteners Provided  
Holes to be 12" O.C. staggered between the  
two rows of nailers.



COMPANY: \_\_\_\_\_

JOB NAME: \_\_\_\_\_

LINEAL FT: \_\_\_\_\_

MATERIAL/GAUGE: \_\_\_\_\_

COLOR: \_\_\_\_\_

MANUFACTURER: \_\_\_\_\_

