

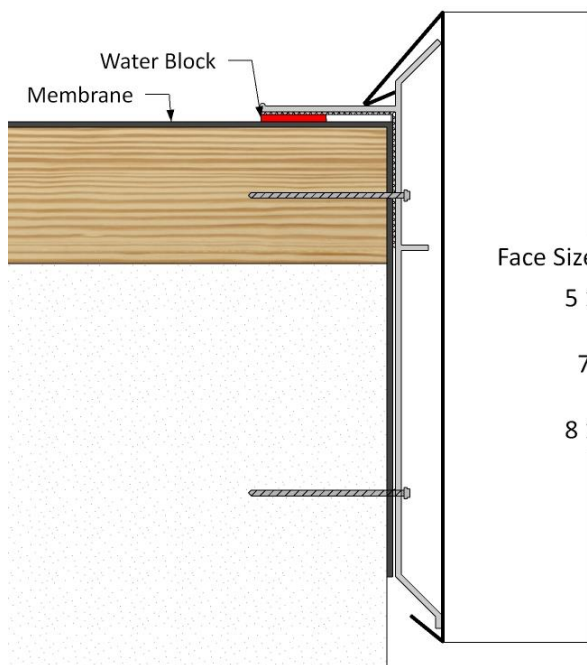
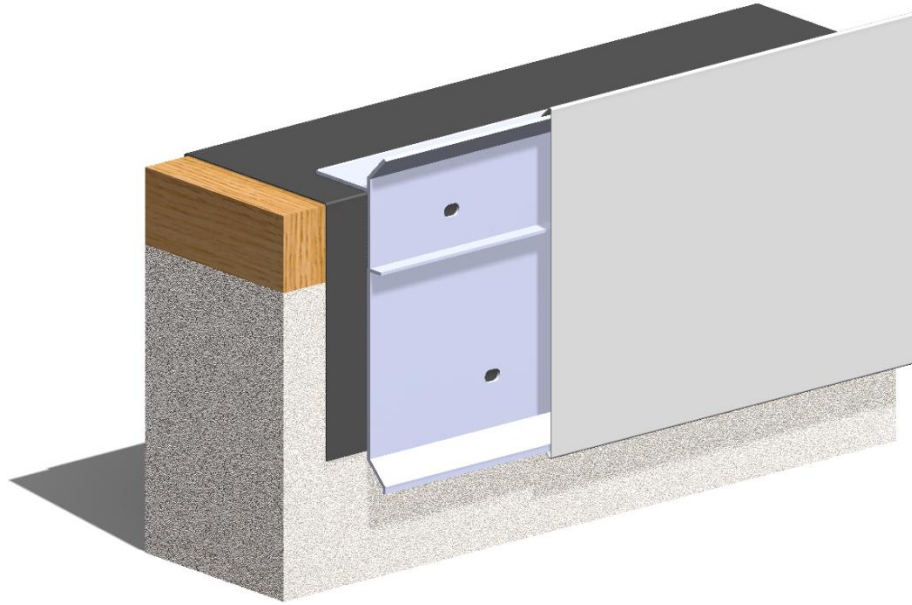


AFAB Bar Edge

Fascia: Available in 24ga/22ga Steel or 032/040/050/063 Aluminum

ANSI/SPRI/FM 4435/ES-1 Compliant

120 MPH Wind Warranty



Available in 10' & 12' Lengths

6063-T6 Aluminum

.090 Thickness

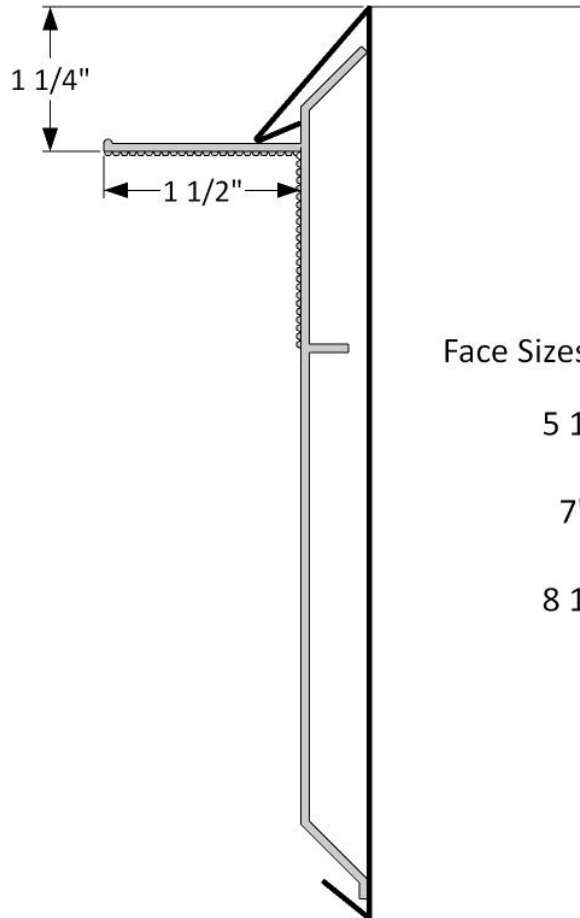
Pre Punched Slotted
Holes @ 12" O.C.

#10 x 2" Stainless
Fasteners 12" O.C.
Included with Purchase

Optional 2nd Row of
Holes if Requested



AFAB Bar Edge Guard



Face Sizes Available:

5 1/2"

7"

8 1/2"

Available in 10' & 12' Lengths

6063-T6 Aluminum

.090 Thickness

Pre Punched Slotted
Holes @ 12" O.C.

#10 x 2" Stainless
Fasteners 12" O.C.
Included with Purchase

Optional 2nd Row of
Holes if Requested

Company: _____

Material/Gauge: _____

Job Name: _____

Color: _____

Lineal Feet: _____

Manufacturer: _____